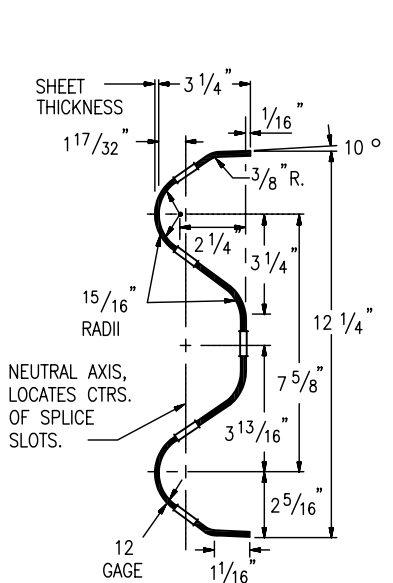
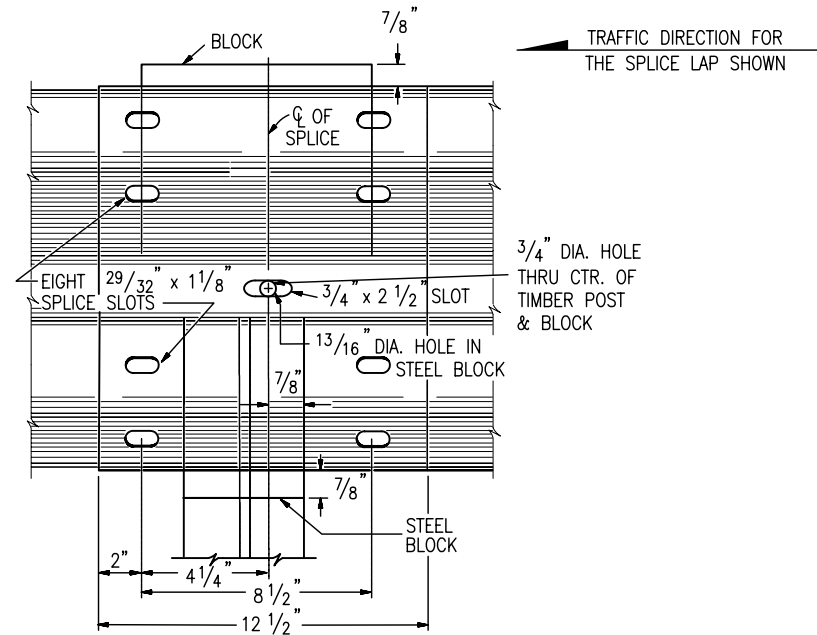


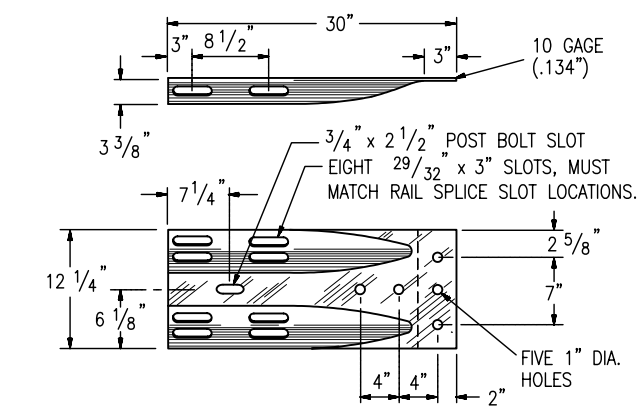
TERMINAL SECTION (FLARED)



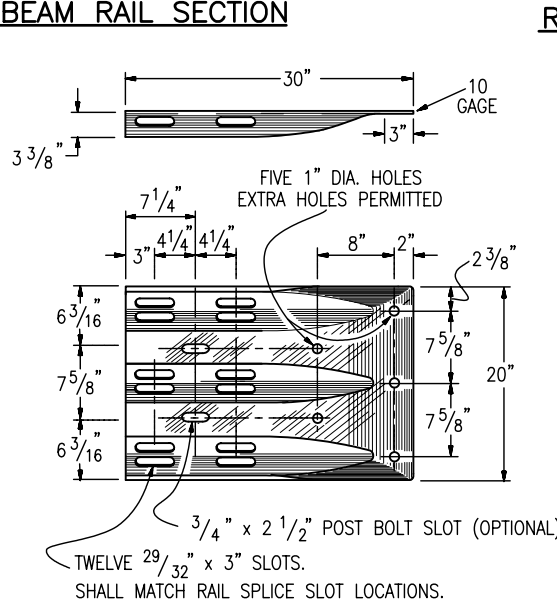
W-BEAM RAIL SECTION



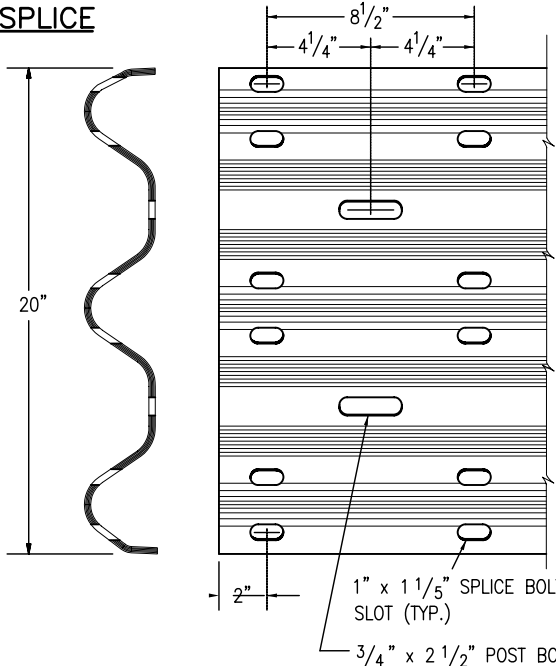
RAIL SPLICE



TERMINAL SECTION (CONNECTOR)



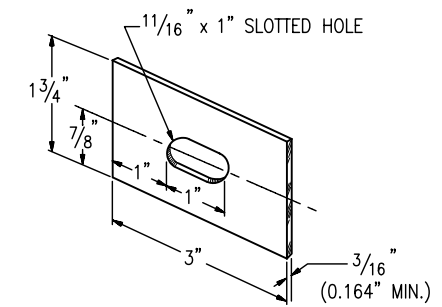
THRIE BEAM TERMINAL SECTION (CONNECTOR)



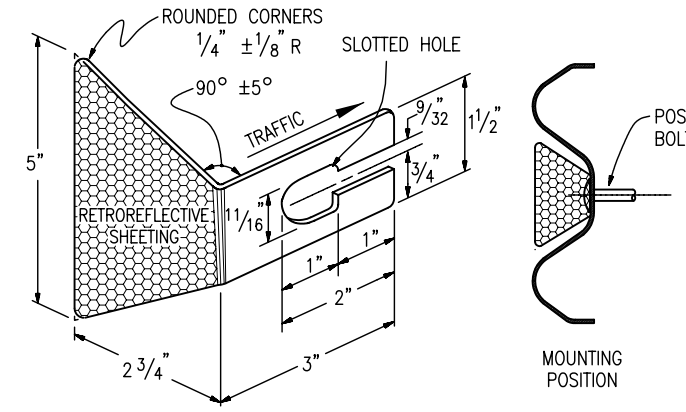
THRIE BEAM DETAIL

PART	MATERIAL SPEC.	GALVANIZING SPEC.	CORROSION-RESISTANT SPEC.
W-BEAM RAIL & TERMINAL SECTIONS	AASHTO M 180, CLASS A OR B	AASHTO M 180, TYPE 1 OR 2	AASHTO M 180, TYPE 4
BASE PLATE	ASTM A 36	AASHTO M 111	N.A.
NUTS, BOLTS & STUDS FOR GENERAL USE	ASTM A 307		AASHTO M 232, CLASS C
HIGH STRENGTH BOLTS & NUTS	ASTM A 325		OR
HIGH STRENGTH STUDS & NUTS	ASTM A 449		
ROUND STEEL WASHERS	ASTM F 436		ASTM B 695 CLASS 50 TYPE 1
RECTANGULAR WASHERS	AASHTO M 180		
OTHER FITTINGS	ASTM A 36	AASHTO M 111	

THE TABULATION OF GUARDRAIL WILL SPECIFY THE TYPE OF CORROSION PROTECTION: GALVANIZED OR CORROSION - RESISTANT STEEL.
STEEL POSTS SHALL HAVE THE SAME CORROSION PROTECTION AS SPECIFIED FOR THE METAL BEAM RAIL. PUNCHING, DRILLING, CUTTING, OR WELDING OF POSTS WILL NOT BE PERMITTED AFTER GALVANIZING.

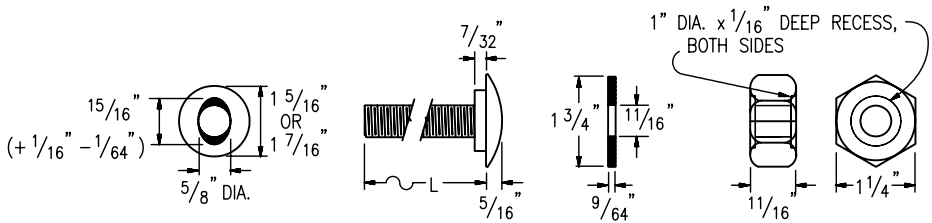


RECTANGULAR WASHER
(TO BE USED ONLY WHERE SPECIFIED.)



RETROREFLECTOR TAB

RETROREFLECTOR TABS SHALL BE MANUFACTURED FROM 12 TO 14 GAUGE STEEL. RETROREFLECTIVE SHEETING SHALL CONFORM TO ASTM D4956 TYPE III. SEE NOTE 7 ON SHEET 3



BUTTON HEAD BOLT WITH OVAL SHOULDER

WASHER

HEX NUT

DIAMETER & TYPE (INCHES)	LENGTH L (INCHES)	THREAD LENGTH (INCHES)	INTENDED USE	AASHTO-AGC-ARTBA STANDARD NUMBER	NO. BOLTS, NUTS & WASHERS
5/8	1 1/4	FULL (1 1/32)	ALL RAIL SPLICES	FBB01	8 PER SPLICE *
BUTTON HEAD	18	MIN. 2 1/2	SINGLE BLOCK & POST (TIMBER)	FBB04	1 PER POST
OVAL	25	MIN. 2	DOUBLE BLOCK & POST (TIMBER)	FBB05	1 PER POST
SHLDR.	10	MIN. 2	FASTEN NOTCHED BLOCK TO STEEL POST	FBB03	1 PER BLOCK

* WASHERS NOT USED AT RAIL SPLICES

Computer File Information	
Creation Date: 07/04/06	Initials: SJR
Last Modification Date: 07/04/06	Initials: LTA
Full Path: www.dot.state.co.us/DesignSupport/	
Drawing File Name: 6060103016.dwg	
CAD Ver.: MicroStation V8 Scale: Not to Scale Units: English	

Sheet Revisions	
Date:	Comments
(R-X)	
(R-X)	
(R-X)	
(R-X)	

Colorado Department of Transportation
4201 East Arkansas Avenue
Denver, Colorado 80222
Phone: (303) 757-9083
Fax: (303) 757-9820

Project Development Branch SRJ/LTA

GUARDRAIL TYPE 3
W-BEAM

Issued By: Project Development Branch on July 04, 2006

STANDARD PLAN NO.
M-606-1
Sheet No. 3 of 16